



www.Source1Parts.com

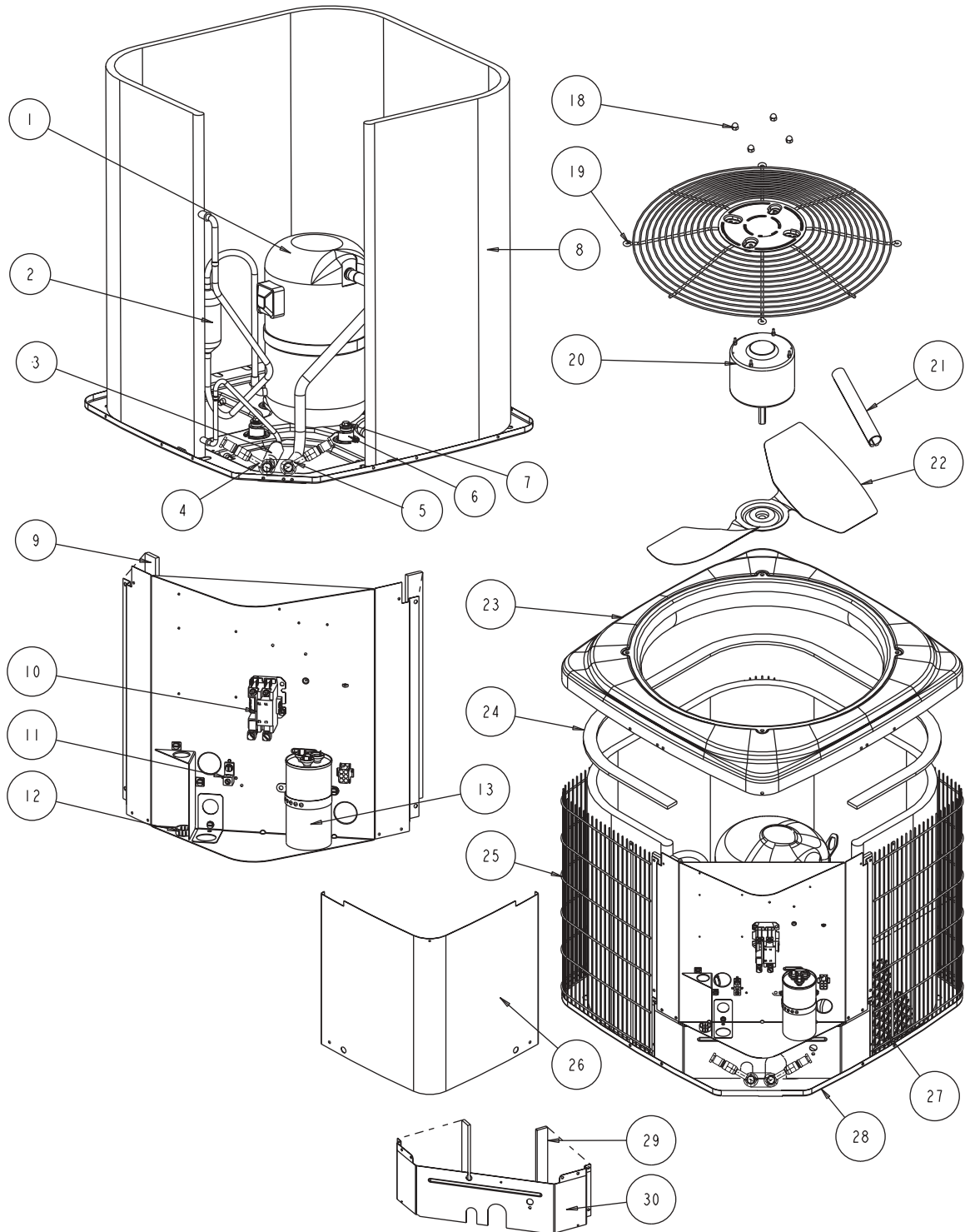
CCGD SERIES - MICROCHANNEL 13 SEER QUICK CONNECT AIR CONDITIONER R-410A, FIFTH GENERATION (STYLE A)

HVAC SERVICE PARTS

Supersedes: Nothing

035-23920-001 Rev. A (0312)

1 of 2



ITEM	DESCRIPTION	CCGD42S41Q5A <
1	Compressor	S1-01504441001
2	Muffler	---
3	Filter Drier	S1-02922195000
4	Coupling (3/8") (Liquid)	S1-02316882000
5	Coupling (7/8") (Suction)	S1-02316883000
6	Compressor Mount (Pkg. of 4)	S1-02808519000
7	Compressor Bolt (4 Req'd)	S1-1048-0033
8	Outdoor Coil Assembly	S1-37327820103
9	Foam Strips, Control Box (2 Req'd)	S1-02815490000
10	Contactora (30 amp)	S1-02427531000
11	Lug, Ground	S1-02521798000
12	Relief, Strain	S1-02522638000
13	Dual Capacitor (40/5 MFD)	S1-02425894700
14		
15		
16		
17		
18	Kit, Motor Mounting (Acorn Nuts)	S1-36390117700
19	Guard, Fan	S1-02642487000
20	Motor, Fan	S1-02435819000
21	Wireway	S1-02815873000
22	Blade, Fan	S1-02634094000
23	Top	S1-07323893002
24	Molded Foam, (B) Outdoor Coil	S1-02815509000
25	Guard, Coil	S1-07327903006
26	Cover, Control Box	S1-07323895001
27	Coil Guard, Plastic Mesh	S1-02642546000
28	Pan, Base	S1-07323894002
29	Foam Strips, Blockoff (2 Req'd)	S1-02815494000
30	Panel, Blockoff	S1-07323898003
31*	Orifice (.073)	S1-02919837005
32*	Bezel Plate	S1-02815487000
33*	Harness, Main Wiring	S1-37320055004
34*	Harness, Compressor	S1-02531884000
35*	Wiring Diagram	167242
36*	Fastener, Push-In (4 Req'd)	S1-02118381000
37*	Switch, Pressure	S1-02535359000
38*	Rubber Mount, Outdoor Coil (6 Req'd)	S1-02815500000

NOTE: *Not Shown

New replacement parts shown in **bold** face type at the first printing of parts list dated 3/12.

Major components and suggested stocking items are shown with shaded item number.

"<" Across from row indicates a change in that row.

--- Not applicable to specified model.

TO ORDER AUTHORIZED FACTORY REPLACEMENT PARTS - Contact your Source1 HVAC Parts Distributor or visit our website at www.Source1Parts.com for a Distributor and Dealer listing.